



ALLIANZ LEGAL PROTECTION

Behind you for what's ahead

For Legal Professional Use

This document should be used for legal professional reference only, as it does not detail the conditions, limitations or exclusions of the cover. Please see the policy wording for further details.



We deliver for your client.

We care about our partnership.

We are Allianz Legal Protection.

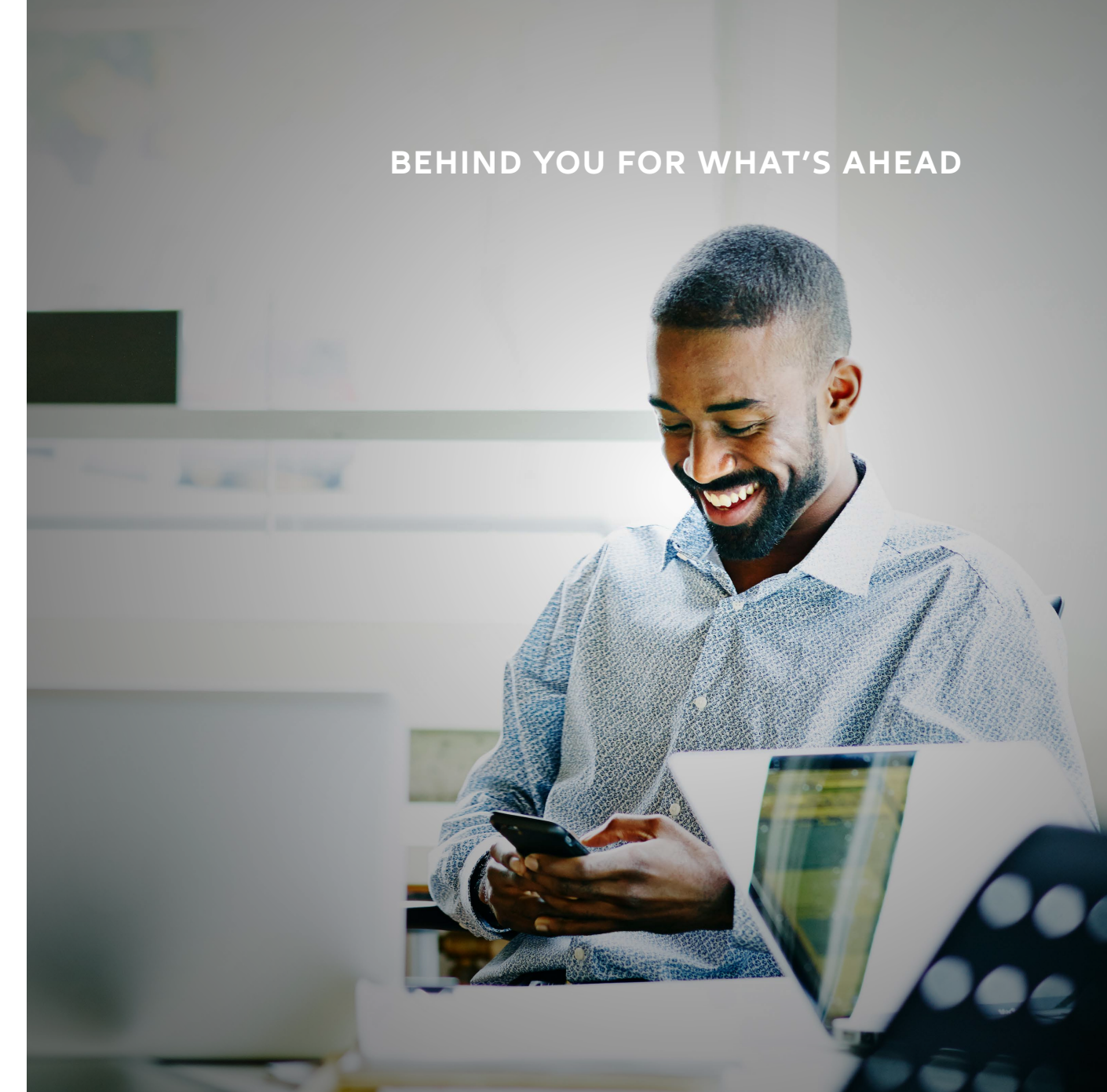
As a specialist legal expenses provider and part of the Allianz Group, we've been providing legal protection solutions since 1986.

We cover both personal and commercial customers through our after the event (ATE) solutions and before the event (BTE) products.

So if you're a legal professional looking for a new ATE scheme provider, you can trust Allianz Legal Protection (ALP).

We deliver for your client

BEHIND YOU FOR WHAT'S AHEAD



We know insurance isn't at the top of your pile

And rightly so. You're busy supporting your clients through life changing and challenging situations. But legal expenses insurance can provide a lifeline to accessing justice and the right outcome.

So, we're here to make it easier with our ATE solutions for personal injury and clinical negligence. Underwritten and delivered by experts in their field, just like you. You can rely on us to deliver when it's needed most.

Our expertise, solutions and people
are our competitive advantage.
We combine legal and insurance
expertise built over decades.



We'll be happy to talk you through what we can offer you and how we'll get the partnership set up.



Three product options:

Equity

- Standard Limits of Indemnity of £100,000
- Ability to request top up cover if you need it
- Premiums based on damages to ensure they remain proportionate
- A quick and simple claims process
- Support to recover ATE premiums if they're challenged
- Deferred premiums payable at case conclusion
- Convenient digital policy handling.

Paid As Incurred Disbursements (PAID)

All the benefits of Equity plus the option to claim some disbursements as they're incurred improving your cash flow.

PAID+

Combines PAID with a wraparound of expert medical services and deferred payment terms from one of the UK's leading providers of medical reports, Speed Medical.

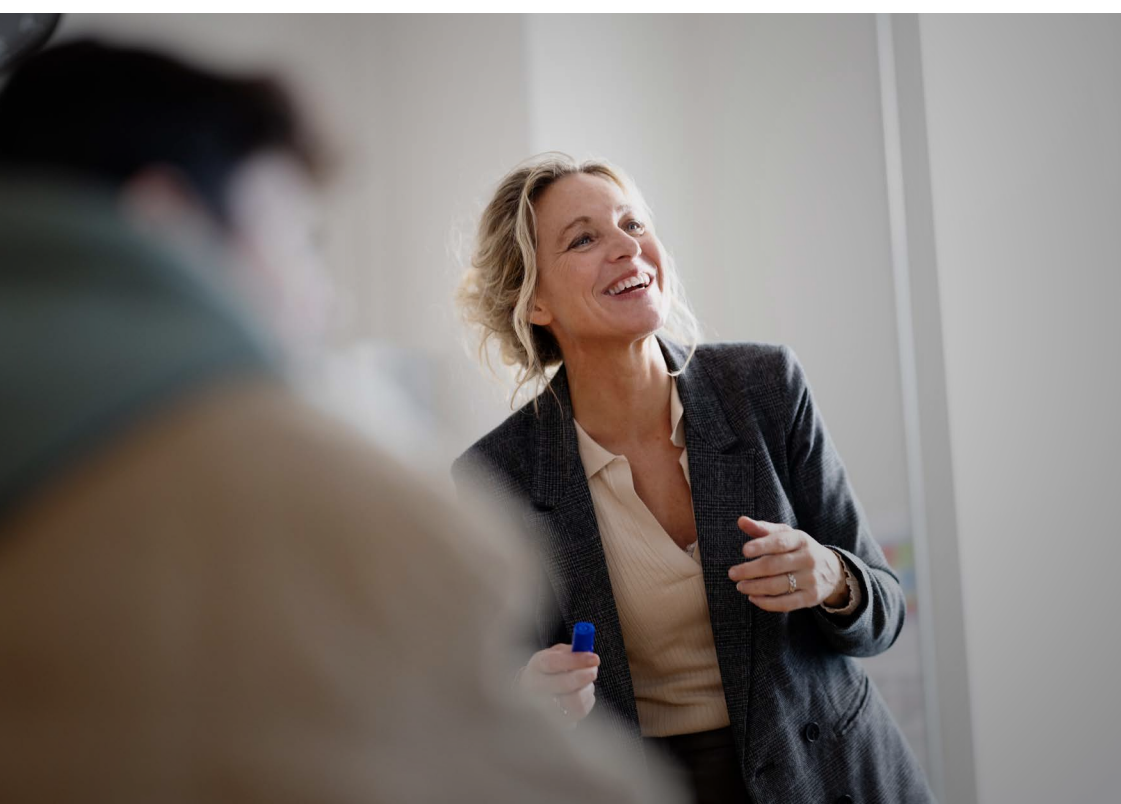
ATE product features

As you'll know, ATE insurance enables people to pursue a personal injury or clinical negligence claim by providing financial protection. But did you know that the product and flexibility varies depending on who provides the cover and who underwrites it?

For all ALP products, we're the underwriter. This sets us apart from many of our peers and is a positive for you, our solicitor partner. It means we can design products to meet your firm's need and price them to recognise your firm's expertise and experience.



If you'd like to find out more about our ATE product, head to allianz.co.uk/legal-protection or speak to one of our business developers.





We offer CII accredited development programmes, including Excellence in Technical, Claims and Distribution.

We deliver. Over 99% of claims paid in full or part.*

*claims made July to December 2021.



we champion expertise

We have a proven track record of success.

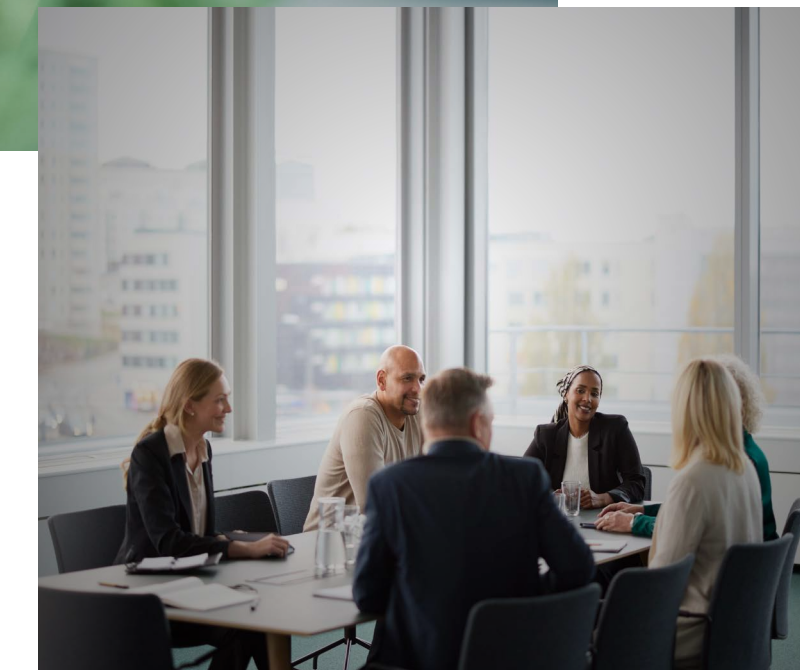


Personal Injury Awards, Insurance Provider of the Year winner 2015, 2017, 2018, and 2021.

Our sales team averages 20 years' experience and are all CII qualified as a minimum.



BEHIND YOU FOR WHAT'S AHEAD



qualified & experienced

We care about our partnership

When it comes to partnerships, there's no one-size-fits-all approach. By taking the time to get to know you, your legal business and your aspirations, we build relationships based on transparency and trust.

We see the big picture, as well as the little details. And we don't take how we work together for granted. Instead, we care. Developing and refining what we do as our partnership deepens and ambitions evolve. Aligning our business values and sharing beliefs. We'll deliver value for us both, and champion the best outcome for you and your clients.



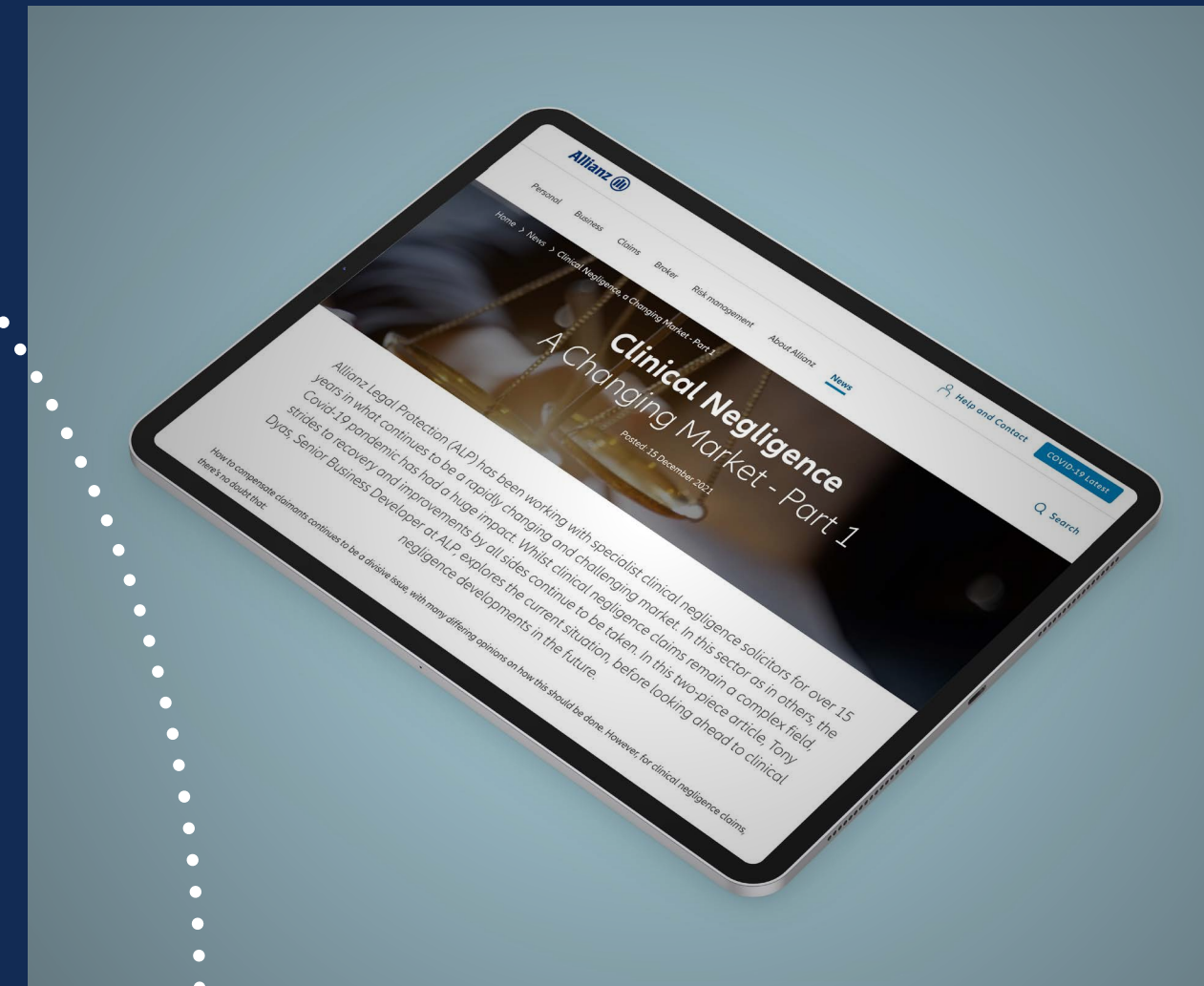
Dedicated account manager and contacts **who know you, your people and your business.**

BEHIND YOU FOR WHAT'S AHEAD



Bespoke training

We can work with you to deliver bespoke training. Whether that's virtually or face to face, we're here to support you and your employees understand the ATE scheme.



Mental health

We care about our partnership, and we also care about your people. That's why we give you access to Mental Health First Aider training for your employees. The training will provide participants with a better understanding of mental health and the factors that can affect wellbeing and the confidence to step in, reassure and support a person in distress, be it a colleague or a client. Speak to your ALP contact if you're interested.



Constant dialogue and insight

We're uniquely positioned to support your business through regular information, benchmarking and market trends. We'll provide regular thought-leadership content to assist you and your clients.

“Fletchers has been working with ALP for the best part of a decade. The support that ALP has given to our business during that time has been unwavering and loyal and based upon foundations of mutual trust and respect. The team at ALP is immensely capable, technical and data focused.

But alongside that, there’s emotional intelligence and a genuine commitment to building lasting, trusted relationships. The combination of these qualities is extremely powerful and it’s our huge pleasure to work with ALP and count them amongst our most valued partners”.

Adrian Denson,
Chief Legal Officer of Fletchers Solicitors



We are Allianz Legal Protection

BEHIND YOU FOR WHAT'S AHEAD



The world seems unpredictable at times

But as Allianz*, we've been helping customers navigate uncertainty for over 130 years. And since 1986 at Allianz Legal Protection, our expert legal solutions have provided security and confidence when your customers needed it most.

But we don't just provide stability and certainty today. We want to make tomorrow better too. As part of one of the largest financial organisations in the world, we aim to go beyond insurance: helping to deliver a more sustainable and resilient future for society.

*Allianz SE

As part of the Allianz group,
we stand for strength and stability.

150,000+ employees

AA- Stable outlook,
Standard & Poor's

100m+ customers

201% Allianz Group
solvency ratio (2022).

70+ countries

Tackling global warming

We're proud to be no. 1 insurer in the Dow Jones Sustainability Index 2021 and a founding member of the [Net Zero Asset Owner Alliance](#). The Alliance is committed to tackling global warming and reducing the carbon emissions of investment portfolios to net zero by 2050.



Our role in society

Through employee fundraising, volunteering and events, we raise money, give our time and offer skills and expertise to a range of charities at a global and local level.

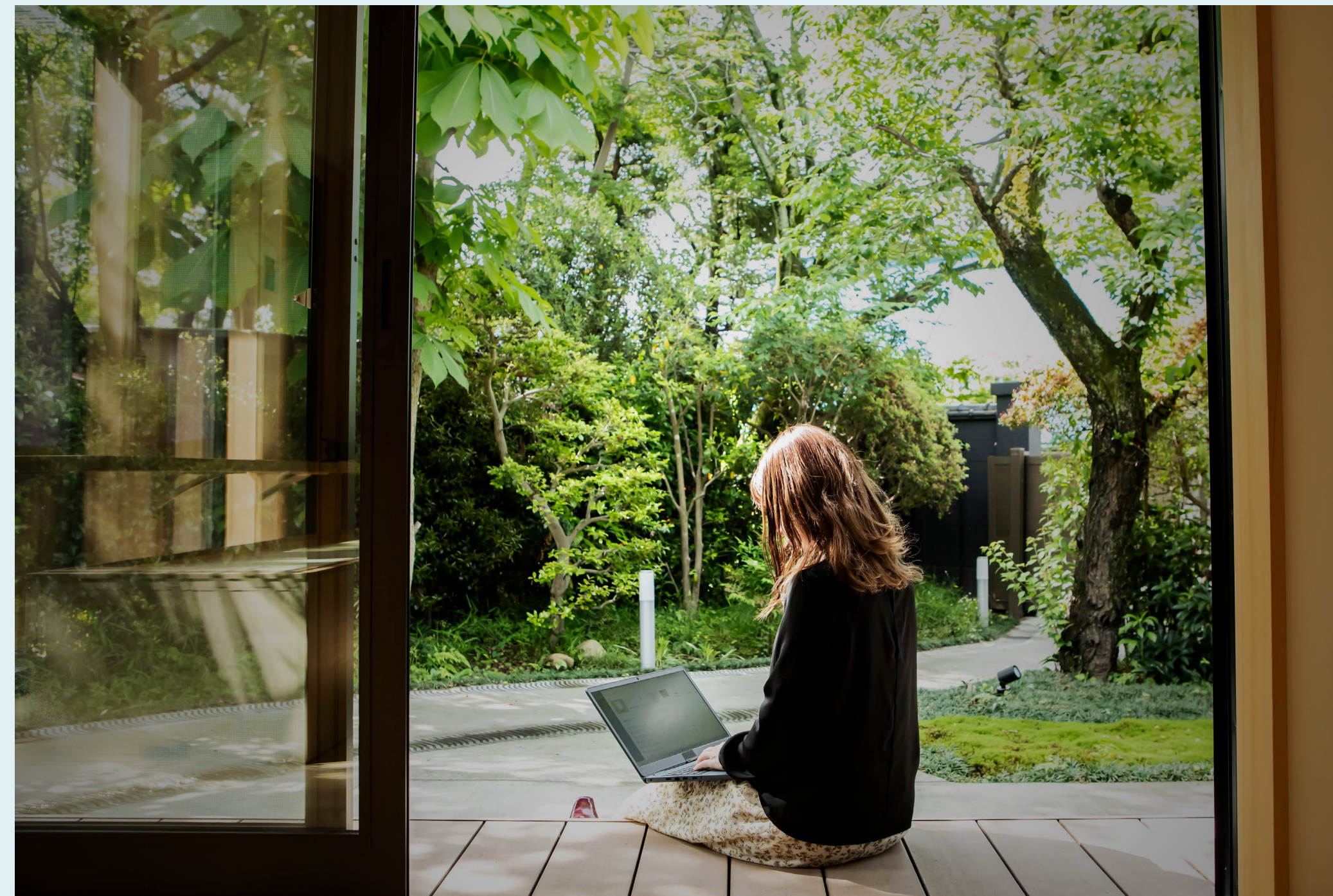
£11.4 million donated in 2020,
including the Covid Support Fund

2,271 hours of volunteering in 2022

£1.275+ million raised for mind

79% cut in CO2 emissions per
employee since 2010

100% of our electricity now
comes from renewable sources.



Get in touch

To discuss your needs

Please contact one of the Allianz Legal Protection business development team
allianz.co.uk/legal-protection.

BEHIND YOU FOR WHAT'S AHEAD



James Barclay

Head of Legal Protection Sales
and Distribution

07817 460 451

james.barclay@allianz.co.uk



Steve Rowley

Business Development
Manager

07885 630 508

steve.rowley@allianz.co.uk



Tony Dyas

Senior Business
Developer

07814 546 133

tony.dyas@allianz.co.uk



Jonathan Thomas

Senior Business Developer

07385 435 557

jonathan.thomas@allianz.co.uk



Sian Stanton

Business Developer

07793 307 326

sian.stanton@allianz.co.uk