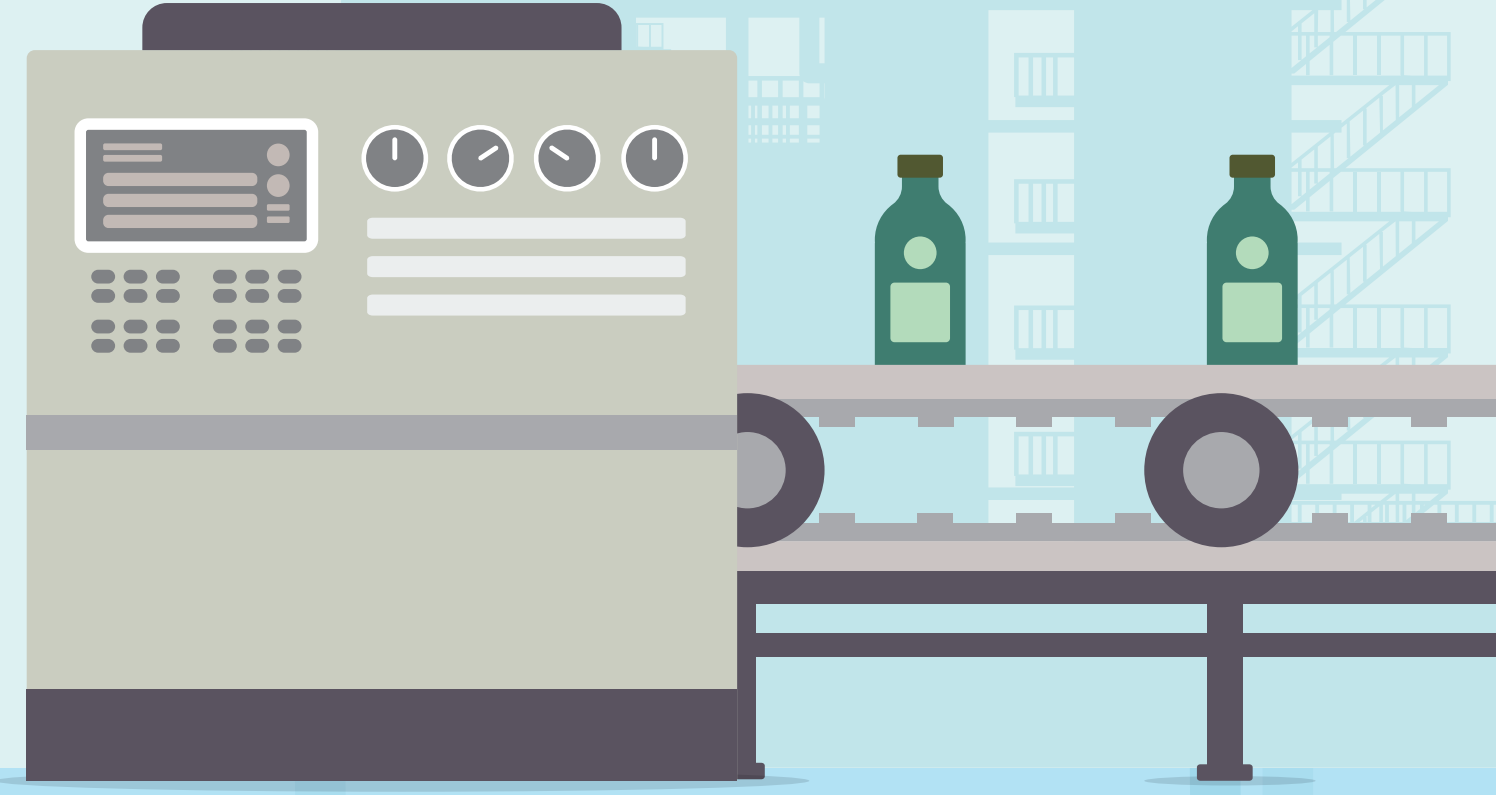


RESTARTING YOUR BUSINESS

CONSIDERATIONS FOR MANUFACTURING



Buildings and working practices



Undertake a thorough inspection of your site, including all buildings (interior and exterior), boundary fences, and gates.



Check fire and intruder alarm protection, CCTV, access control coverage and guarding provisions.

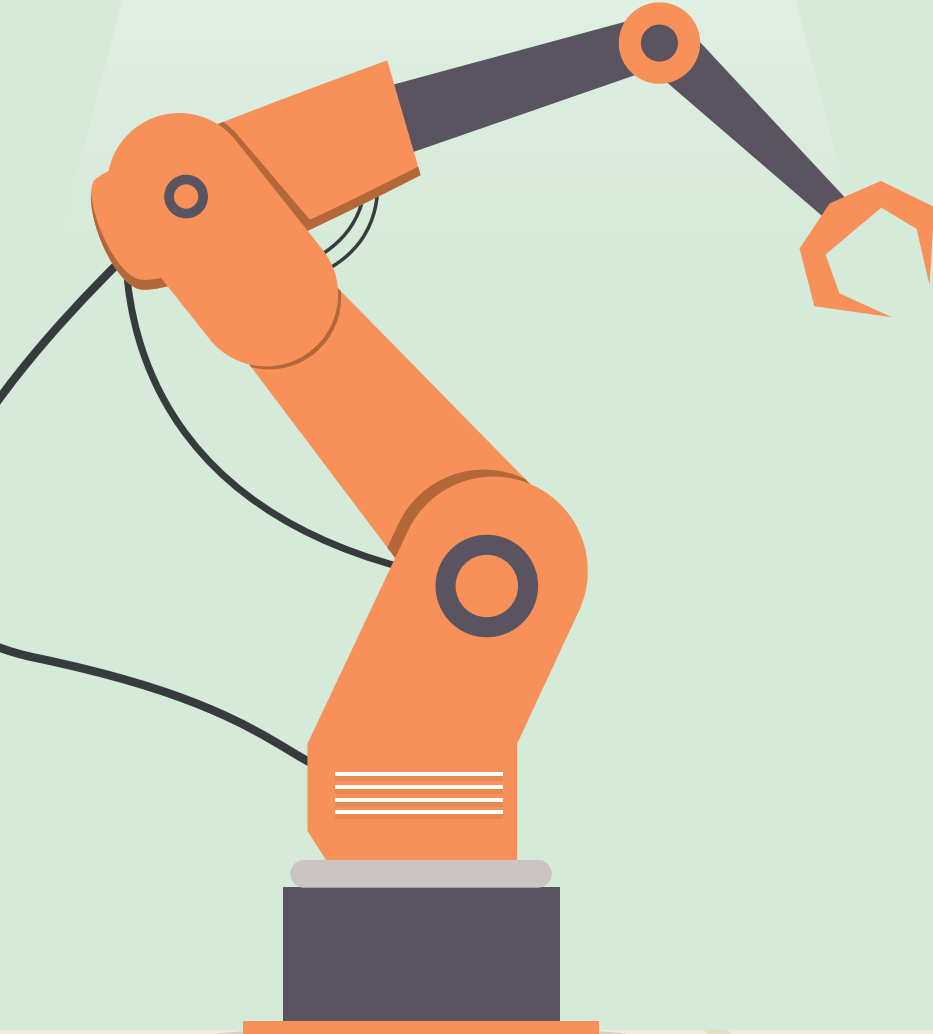


Review IT and cyber security processes and procedures.

also...

Check adequate and suitable welfare facilities are available, including areas for safely changing and storing clothing and personal protective equipment. Where overalls and other personal protective equipment are provided, review laundry arrangements.

Equipment and machinery



Undertake a thorough inspection of utility services.



Complete and reinstate any inspection, testing and maintenance procedures.



Verify that all protection and detection systems, including fire sprinkler and suppression systems, fire pumps, water supplies, fire alarm systems, intruder alarm systems, CCTV and access controls are in service and functioning correctly.

also...

Remember to also check where necessary machinery guarding and interventions, adequacy and safety of storage racking, emissions control equipment, noise control equipment, process related safety equipment, pollutants control, other waste management plant and control equipment for hazardous substances etc.

Employees



Review support (practical and well-being) for any employees who continue to work from home.



Ensure your employees have the competence and capability for the work activities to be carried out, through the necessary skills, training and licensing requirements.



Sanitisation and cleaning



Carry out enhanced cleaning, disinfection and sanitisation regimes covering the workplace in its entirety, both pre and post re-opening. This should include company vehicles, forklift trucks and pallet trucks in your cleaning regime, and ensure this is recorded and covers on-going requirements.

also...

As well as updating fire risk assessments to keep your premises and people safe, ensure storage and use of any alcohol-based, flammable sanitizers is clear of ignition sources (for example, electrical equipment, hot surfaces, smoking areas etc.) store them within purpose designed flammable liquid cabinets, or otherwise, steel cabinets.



Training



Requirements around social and physical distancing are likely to impact the practicalities of training delivery, including induction and toolbox talks.



Review training arrangements and competency requirements and give specific consideration to the availability and responsibilities of key personnel:

- > Senior managers
- > Human resources and health, safety & environmental personnel
- > Department managers and supervisors
- > Appropriately qualified technicians and plant and machinery operators
- > Maintenance personnel
- > First aiders and fire marshals

also...

Check expired tickets, certificates and interim measures. A number of the trade organisations have sites indicating interim arrangements where training may have expired.

