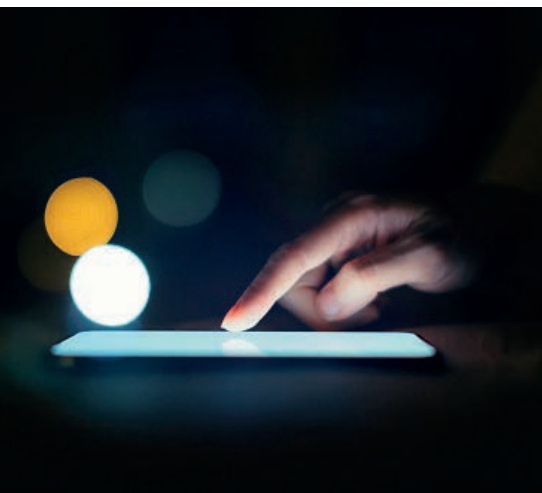


Allianz Claims Hub



Take the management of claims into your own hands.

Allianz Claims Hub lets brokers and fleet managers quickly and easily notify and track the progress of their commercial motor claims online, as well as being able to chat to an experienced claims handler.

Notification

Conveniently notify commercial motor claims 24 hours a day, 7 days a week:

- **simple and dynamic questions** - we capture the relevant information to progress your claims straight away
- **digital document upload** - securely and swiftly upload supporting documents and images at any point in the claims journey
- **audit trail** - along with time stamping we'll also provide a statement of fact summarising the claims.

Tracking

With just one click you can track the progress of your claims and get an update on:

- **validation** - has the claim been validated or do we require further information
- **liability** - who's accepted liability and when

- **repairs** - how the repairs are progressing from instruction to payment
- **third-party claims** - has the claim been settled, denied or redirected, and if recovery is being pursued.

Live Chat

Need a quick claims update?

You can have a two way real-time conversation with one of our expert claims handlers on the following types of claims:

- Property
- Casualty
- Engineering, Construction & Power
- Motor Trade
- Motor Fleet

Our claims handlers will continue to provide you with proactive updates throughout the life of your claims.

Internet browsers

Allianz Claims Hub works best in the following browsers: Google Chrome, Internet Explorer Edge and the latest version of Firefox.

For Intermediary Use