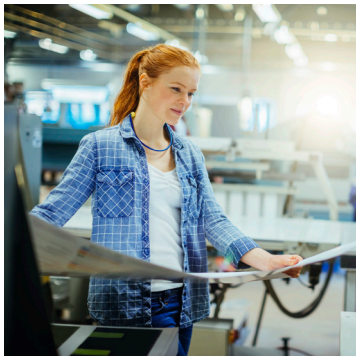


PRINT, PUBLISHING AND MEDIA

trade guide

With technology constantly evolving, Print, Publishing and Media companies need to keep up-to-date and use state of the art filming equipment, computers and machinery in order to remain innovative and successful. This equipment can become extremely costly and, therefore, having the right cover in place is essential for companies within this sector.



ALL MACHINERY

Printing presses and other types of print and publishing machinery often contain major components which are extremely costly to repair or replace. Our All Machinery policy is designed to cover:

- Damage to machinery caused by sudden and unforeseen events
- Damage to own surrounding property belonging to the insured or in their care, custody or control, caused by pressure plant explosion
- Damage due to operator error
- Breakdown of machinery.

Most losses are settled on a new for old replacement basis.

MACHINERY BUSINESS INTERRUPTION

When print and publishing machinery is out of action, it can disrupt or possibly stop production meaning the business operations are interrupted for a prolonged period of time, resulting in financial losses. Our Machinery Business Interruption policy provides:

- Flexible cover that can be arranged on an 'all plant and machinery' basis
- Flexible indemnity periods
- Cover designed to complement our All Machinery product.

ELECTRONIC EQUIPMENT

Cameras, outside broadcasting equipment and transmitting equipment commonly used within the media and television industry can be susceptible to damage and therefore financial loss. Our policy covers:

- Owned or hired in equipment
- Computer media cover
- Additional expenditure or financial loss if requested.

COMPUTER

Reliance on computers for data processing, communications, design and document management means that they are an integral to business operations within the print and publishing industry. Our Computer policy covers the latest computer equipment and technology and includes:

- All Risks cover for computer equipment
- Full theft cover without forcible entry requirement
- Full breakdown or derangement cover on personal and portable computers
- Cover for loss or damage to computer media
- Additional expenditure cover.

INSPECTION SERVICES

Examples of items we inspect:

- Guillotines
- Printing presses
- Lifting equipment, e.g. scissor lifts/cherry pickers.

SPECIAL SERVICES

Special Services which may be applicable:

- **Electrical** – a variety of fixed wiring solutions
- **Energy services** – helping businesses become compliant and reduce future energy usage
- **Health and safety** – bespoke services to assist with regulatory compliance.