

ENGINEER SURVEYOR RISK ASSESSMENT

Risk details

Engineer Surveyors activities are such that the nature of work and workplace changes frequently. As such, the risk assessment must therefore concentrate on a broad range of risks. When less common risks arise, detail planning and employee training are needed to take into account those risks and enable them to be controlled.

To cater for the changing nature of work place hazards Engineer Surveyors undergo extensive training to ensure that they understand the appropriate risk control measures to be applied, this is done by a dynamic risk assessment that supports our generic risk assessments.

SAFED PASSPORT AND DYNAMIC RISK ASSESSMENT: RA1

In order to carry out their examination and assessment services safely, Allianz Engineer Surveyors are required to have appropriate health and safety knowledge and awareness covering all the client locations that they are likely to be called upon to visit. This can only be achieved by working in partnership with the client.

To achieve this, all Engineer Surveyors are recruited against the strict requirements of the United Kingdom Accreditation Service (UKAS) Schedules for the accreditation of inspection bodies, and in line with the mandatory aspects of the Safety Assessment Federation (SAFed) Standard SSO1: 2001. They are fully trained, authorised and have completed **"The SAFed Health and Safety Passport Scheme"** awarding them **"The SAFed Health and Safety Passport"**.

This scheme follows the Health & Safety Executive (HSE) and Health & Safety Authority (HSA) guide for passport schemes and is subject to external assessment by The Royal Society for the Prevention of Accidents (RoSPA), has been designed with the specific intention of meeting these requirements and allows Engineer Surveyors to routinely carry out dynamic risk assessments for any location visited. In addition, unlike any other existing Health and Safety Passport scheme, the SAFed scheme takes account of the unique and specialist activities that engineer surveyors undertake, thus providing individuals with the appropriate health and safety knowledge and awareness required to ensure that their examination and/or assessment activities are undertaken safely.

Our accreditation to ISO/IEC 17020 and SAFed SS01 also ensures that the continual training and competency of our Engineer Surveyors is maintained.

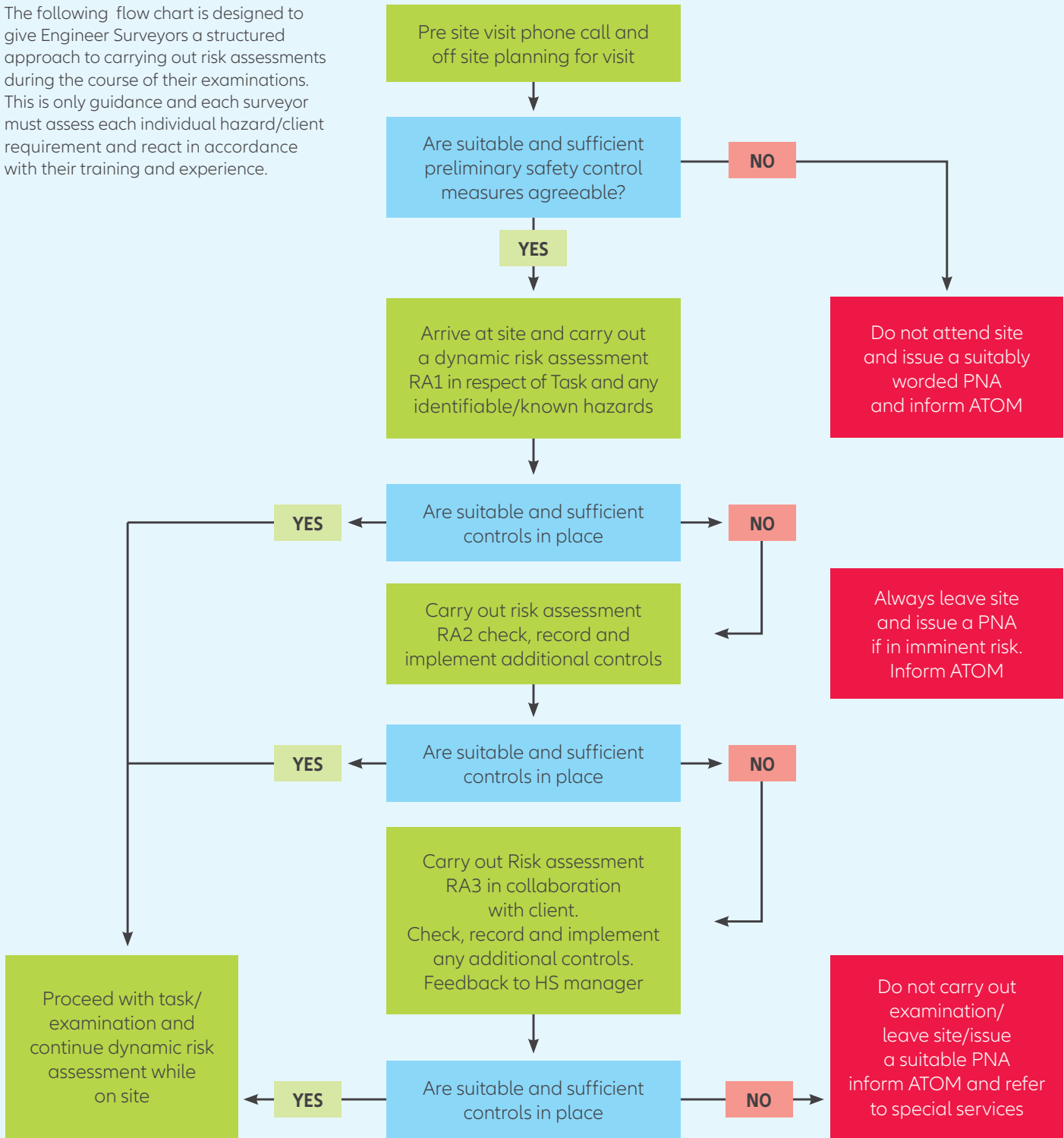
The SAFed Health and Safety Passport is applicable to the diverse range of locations in which Allianz Engineering operates including, but not exclusive to:- Construction, Mines & Quarries, Manufacturing, Leisure sites, Utilities, Communications, Catering, Logistics (storage and distribution), Service industries, Airports, Retail, Offices.

MODULES COVERED:

- Accident, first aid and reporting procedures.
- Asbestos.
- Confined spaces.
- Electricity in the workplace.
- Emergency procedures including fire safety.
- Manual handling and musculoskeletal issues.
- Occupational health.
- Overview of Health, Safety and Environmental Law.
- Personal protective equipment.
- Quarries.
- Responsibilities and communication lines.
- Risk assessment methodology.
- Safe systems of work.
- Safety signs
- Work equipment.
- Working at height.
- Workplace safety, access and egress.
- Workplace transport safety.

ENGINEER SURVEYOR RISK ASSESSMENT FLOW CHART

The following flow chart is designed to give Engineer Surveyors a structured approach to carrying out risk assessments during the course of their examinations. This is only guidance and each surveyor must assess each individual hazard/client requirement and react in accordance with their training and experience.



If the client requests a site specific risk assessment that is outside of our standard operating practices, the Engineer Surveyor should direct the client to their line manager who will, where appropriate, arrange for this to be carried out via a chargeable special service contract.