



Strong partners for what's ahead

Working in partnership with you

For Intermediary Use

Together, we shape, we care, we deliver

We believe a business partnership should be equal parts business and partnership. That's why our broker partnerships are unions of like-mindedness.

Where keeping customers safe and secure is just the start. Where combining experience, expertise and a keen understanding of customer needs provides fuel for innovation and change.

Where peace of mind comes as standard. And where working together in a state of continuous collaboration can make a real difference - not just in shaping the industry, but in helping to build a better society for people today and the generations to follow.

We see the big picture and the little details. We share knowledge and receive insight. We listen and evolve. We may not always agree, but we always remain by your side. All to help grow our relationship for the long term.

So we create partnerships that are common in their goals - and unique in their makeup.

As our trusted broker partner, this is our commitment to you to make sure that together, we deliver for our customers today and tomorrow.

[Strong partners for what's ahead.](#)

Working together for your success

Business risks are evolving in our ever-changing world. For over 130 years, Allianz has worked closely with partners to handle these challenges.

Here in the UK, we're **Allianz Commercial**: one face to market, serving all of your business insurance customers from SME and mid-sized companies to the largest multinationals.

Powered by the people, financial strength and capabilities of the world's number one insurance brand, we'll support you through globally coordinated and locally delivered solutions.



*Large corporate solutions are offered by Allianz Global Corporate & Speciality (AGCS).

Unlocking opportunity, together

We believe in **long-term relationships** built on trust, expertise and constructive challenge.

We're committed to working with you to find the right solution whatever comes your way.

There's no one size fits all approach so we take the time to get to know you, your business and your aspirations. We believe in building relationships based on mutual trust and respect. We won't be afraid to challenge you and we want you to challenge us, too.

Insurance isn't always straightforward, but we're happy dealing with complexity.

Our people are qualified, accessible and empowered to make informed decisions that unlock opportunities and support long-term partnerships.

You can speak to our experts in person and you can trade with us digitally. We use technology to simplify and improve your experience, never to replace our relationship.

So everything you'd expect from the Broker Partner of the Year, 2023.

Dedicated contacts who know you, your people and your business

Specialist teams for Construction, Real Estate, Multinational and Motor Trade

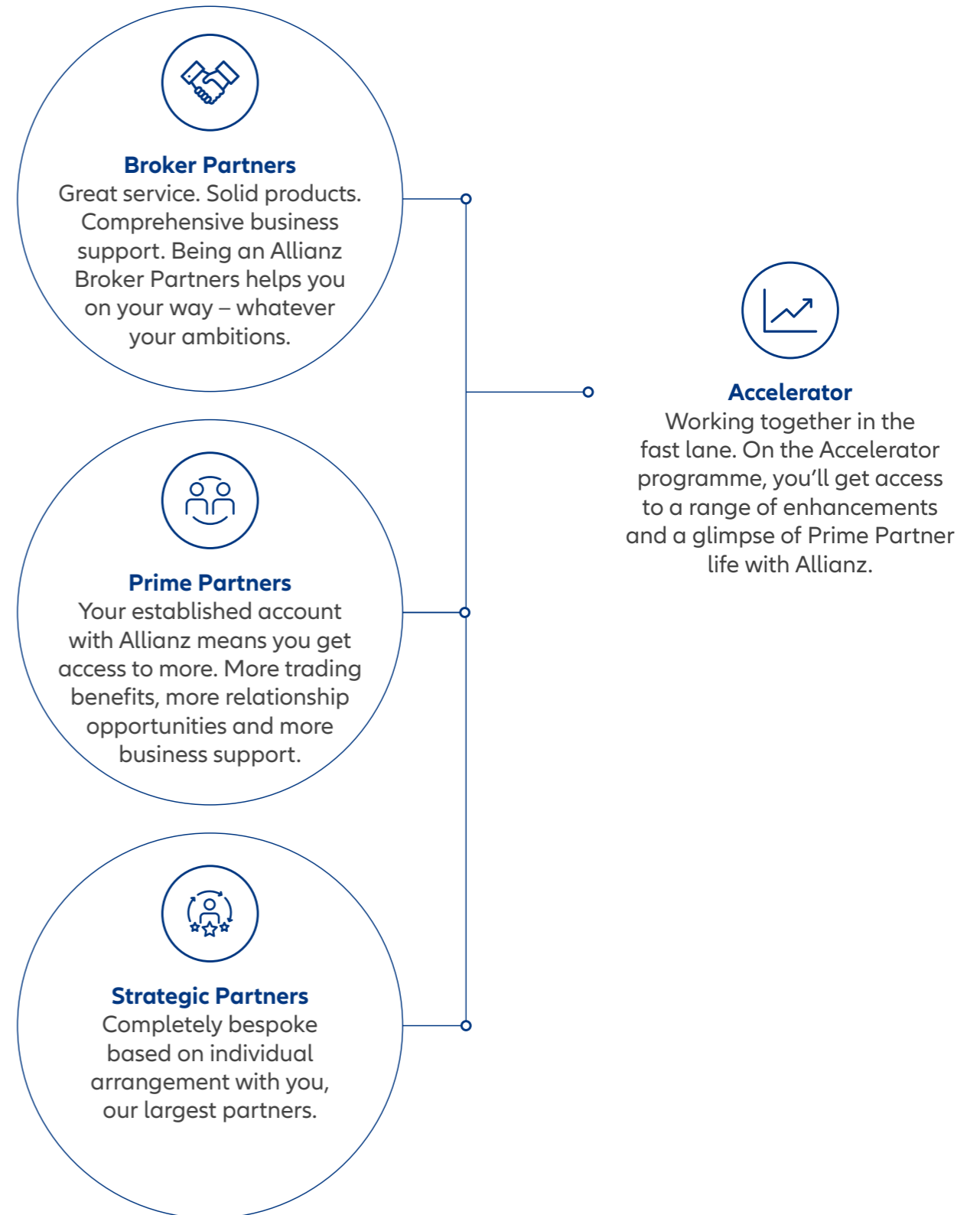
Specialist Claims handlers for Motor, Property, Casualty and Major Loss

Experienced trading underwriters in our extensive branch network



A bespoke approach for all types of brokers

Insurance business is all about people - and their unique preferences and circumstances. That's why we have a progressive offering for brokers based on mutual opportunity.



Enabling growth, together

We're **specialists** in risk, but we also know a fair bit about managing businesses, too.

And it's not just your customers we can help. So whether you want to **grow your business**, explore new ways of doing things or just make your business more efficient, **we're here to help** you set your course for tomorrow.

Dependent on whether you're a **Broker Partner**, on our **Accelerator** programme or a **Prime** or **Strategic Partner**, we could offer you access to:

Business support solutions
managing the risks to your business.

Schemes and rollovers
supporting **growth opportunities**.

Allianz Lawphone for brokers
24/7/365 expert legal advice for your business related matters.

Marketing and tender support
to help you **secure** new or existing business.

Shaping tomorrow's offerings
through your **insight, experience and feedback**.



Supporting customers, together

We offer the **solutions** you need to get it right for your customer. Every time.

Quality products and an outstanding claims service - whatever your customers' needs.

Whether it's simple or complex, you can trust us to provide fair and reliable solutions for your customers and most importantly, a first class experience at the moment of any claim.

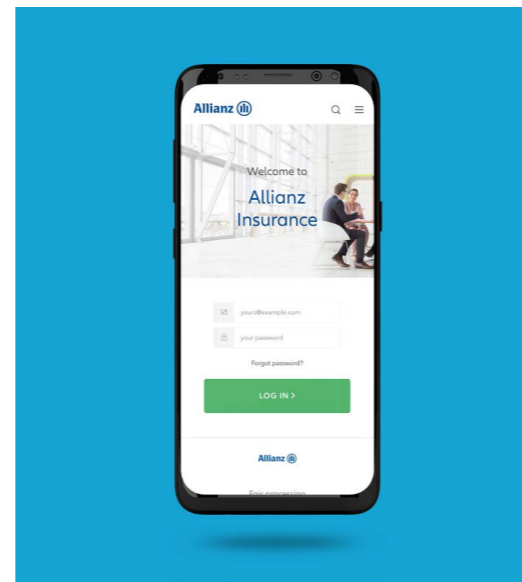
We resolve claims quickly and transparently, with our customers' best interests at heart. We say what we do and we do what we say, and we clearly explain every step on the way. There's a range of channels for you and your customers to get in touch, using the

latest technology for your convenience. Our partners are chosen for the value they deliver and their shared belief in putting the customer first.

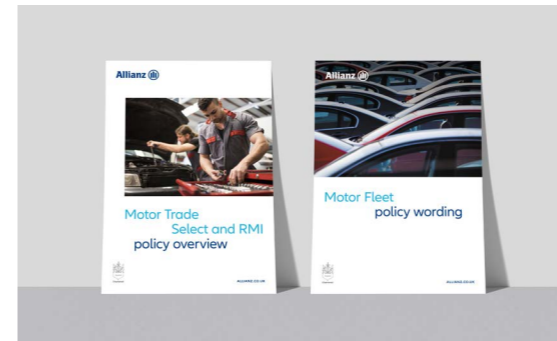
We know that every business is different, so our people are committed to working with you and your customers to achieve the best outcomes. We're passionate about being the best - and that's why you can recommend us to your customers.



"Brokers and customers can confidently rely on the service offered by the Allianz claims teams."



Wide range of sector-specific **mid corporate solutions**. Plus, our **Engineering, Construction and Power solutions**, include **Inspection and Consultancy services** delivered through a nationwide network of Engineer Surveyors.



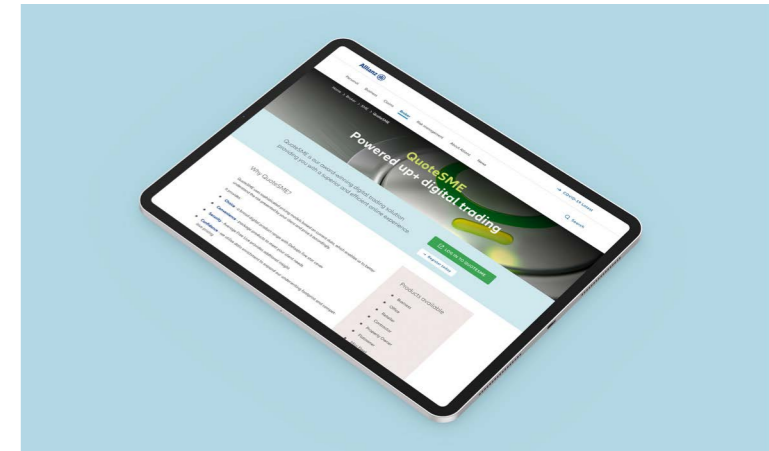
Comprehensive **Motor Fleet** and **Motor Trade** offering.



Delivering tech-enabled claims service to such a high standard is really impressive and definitely raises the competitive bar."

Supporting you through our **claims hub** and live chat.

STRONG PARTNERS FOR WHAT'S AHEAD



Full cycle e-trading via our award winning **QuoteSME platform**.



"Allianz handled this claim with professionalism and responsiveness."

[Click here](#) to see what our customers are saying.



Further large corporate solutions are available from our global, corporate and specialist underwriting teams*.

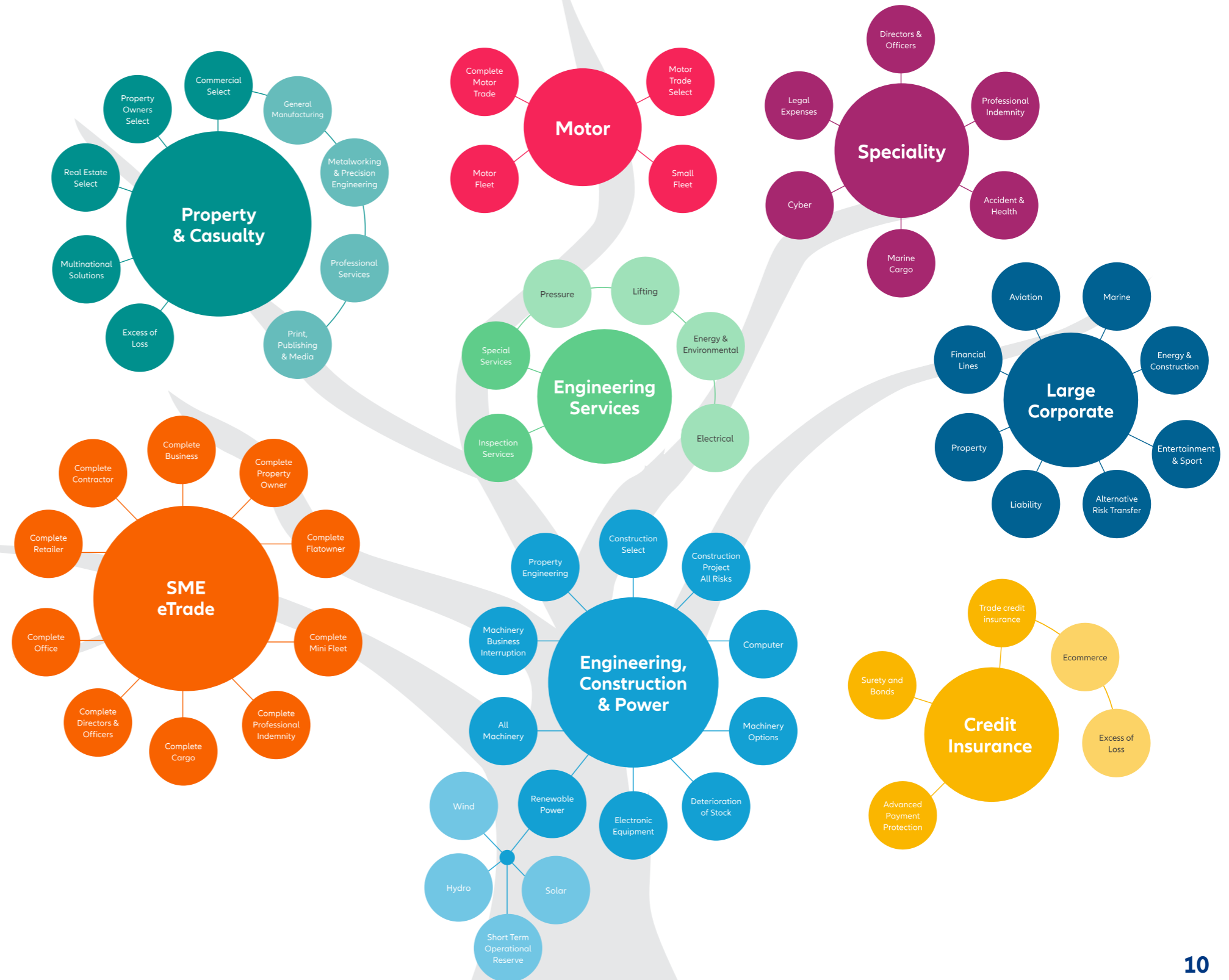
*Offered by Allianz Global Corporate & Speciality (AGCS)

Allianz's commercial products tree

Click on any of the Allianz Commercial or Allianz Trade products.

Read about Allianz Commercial's appetite for SME and mid-corporate, as well as our large corporate appetite in London and the Nordics.

Along with Allianz Trade's credit and surety solutions.



Sharpening expertise, together

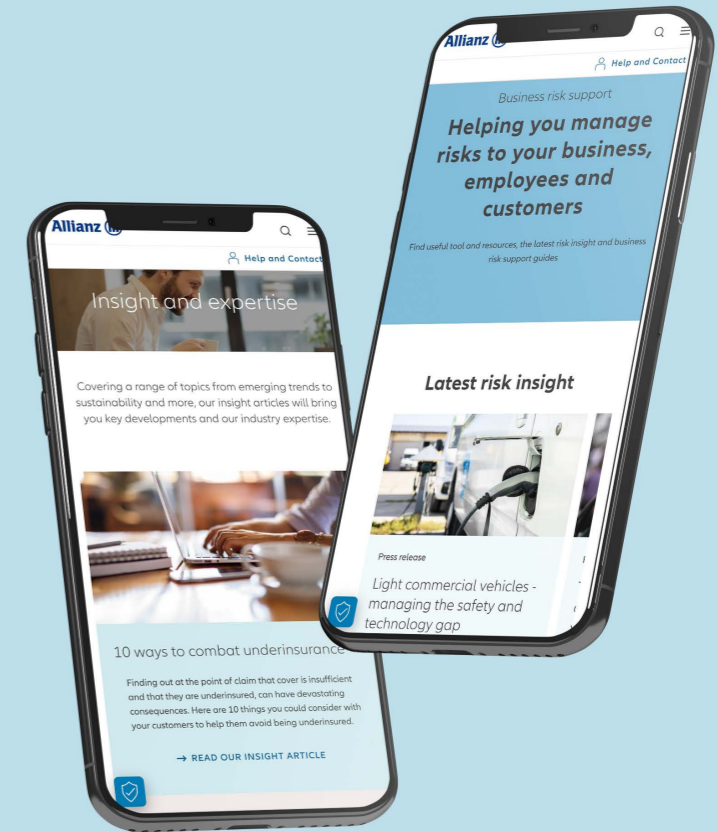
We're **passionate** about sharing insight and expertise to give you and your customers the edge.

Offering you a comprehensive development programme and regular market insight.

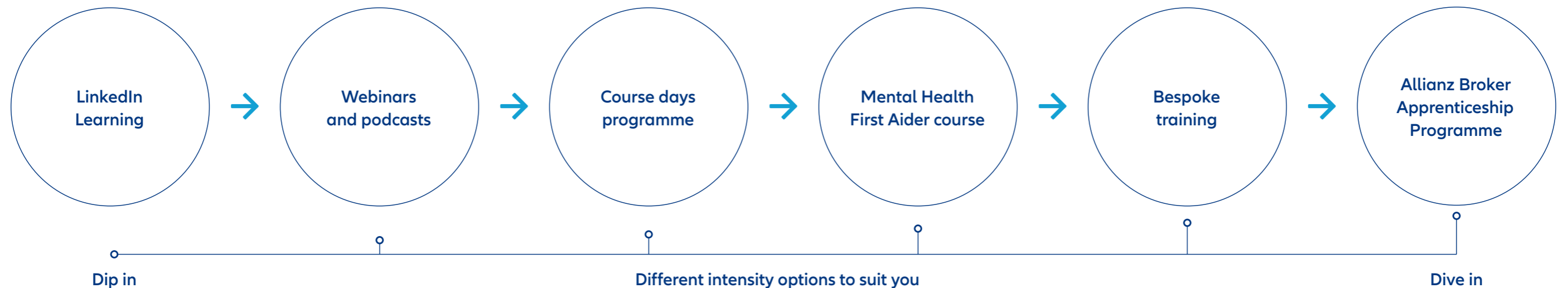
We're passionate about investing in people. In our employees as well as in our partners. From product training to apprenticeships, our multichannel broker training programme, [Allianz Partners Academy](#), helps you and your teams stay on the front foot. So you can confidently guide your customers through an ever evolving landscape of risks and challenges.



Plus, you'll always have access to the [latest industry insight](#) and [business risk support](#) for your customers.



You could have access to:



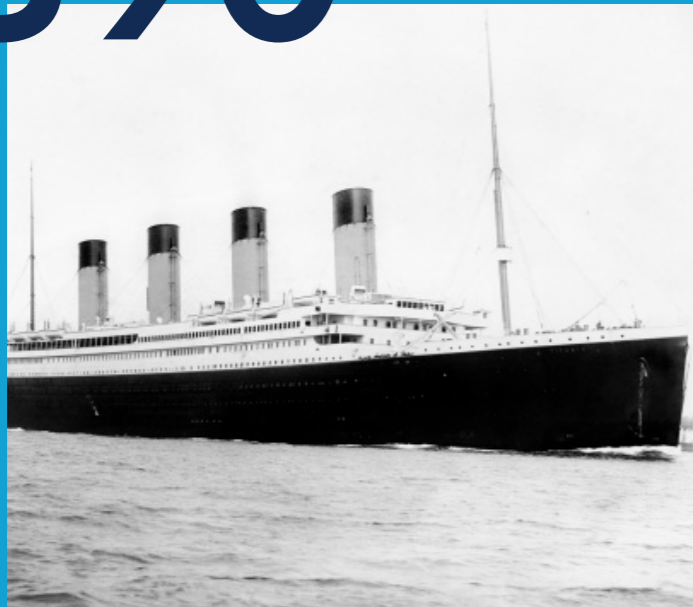
Navigating uncertainty, together

The world seems unpredictable at times. But we've been in this since 1890. *All around the world.*

Allianz UK S&P rating AA- (2022)
Allianz Group solvency ratio of 201% (2022)

We're committed to the markets we operate in and to the partners we work with. The future is exciting and so are our plans to invest and grow.

1890



When horses dominated the streets, we secured cars, giving people the courage to drive. And through each major challenge since, from the Titanic to the recent financial crisis, we have - and will continue - to provide you with confidence.



150,000+
employees worldwide

100m+
customers

70+
countries



Allianz  Partners

Allianz  | Allianz Trade



Worldwide Olympic and Paralympic
Insurance Partner

From 2021 to 2028, we are the Worldwide Insurance Partner of the Olympic & Paralympic Movements, as one of just a few worldwide partners: a unique position and great opportunity for our people, business and brand.

Shaping tomorrow, together

As one of the largest financial organisations in the world, we **go beyond insurance:** delivering a more sustainable and resilient future.

We know we can make a difference, and we want you to be part of it. Whether it's supporting our communities or protecting the environment - together, we can shape our future.



Allianz Insurance ranked 14th in The Inclusive Top 50 Employers List. Plus, we've been granted the silver award in the Ministry of Defence's Employer Recognition Scheme (ERS).



£30,000 pledged to local charities through our Community Fund.



Championing mental health through our partnership with Mind - we've raised over £1,000,000!

Why not sign up to our Mental Health First Aider courses to support your employees' mental health and wellbeing?

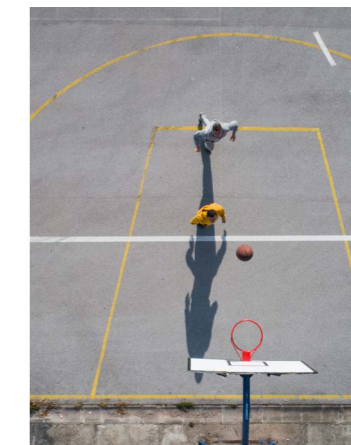
Official Insurance Partner of England Rugby. Partner to the men's and women's England rugby team. Title partner for the women's Premier 15s and the Inner Warrior grassroots rugby programme.



We're making a positive impact through sport. Proud to be one of 29 brands to be recognised in Laureus Sport for Good Index.



Get involved in our annual Allianz World Run.



Allianz Sports Fund - put your local sports club forward for an Allianz grant.

We're working hard to minimise the impact we have on the environment. But as an industry, we want to do more and **support you to do so too.**



Our [sustainable procurement charter](#) encourages and supports suppliers adopt ESG practices.



A founder of the [Net Zero Asset Owner Alliance](#).



STRONG PARTNERS FOR WHAT'S AHEAD

[Allianz Net Zero Accelerator](#) - helping to start you on your journey towards net zero through carbon footprint measurement and practical guidance.

We provide [responsible products and services](#), including a suite of [renewable power insurance products](#).



2012

Carbon neutral since 2012



Top 3

Insurer in the Dow Jones Sustainability Index (2022)



100%

Of our electricity from renewable sources



2030

Commitment to phase all coal risks out of our business by 2030



Our Engineering Inspection business reduce plastic waste by using a more [environmentally friendly method of tagging equipment](#).

Plus, our [engineer surveyors can now inspect charging points for electric vehicles](#).

To find out more about what we can achieve together, please speak to your Allianz development manager or visit: allianz.co.uk/broker



Allianz Insurance plc.

Allianz Insurance plc. Registered in England number 84638 Registered office: 57 Ladymead, Guildford, Surrey GU1 1DB, United Kingdom.

Allianz Insurance plc is authorised by the Prudential Regulation Authority and regulated by the Financial Conduct Authority and the Prudential Regulation Authority.

Financial Services Register number 121849.

No duty to update

The Allianz Group assumes no obligation to update any information or forward-looking statement contained herein, save for any information we are required to disclose by law.